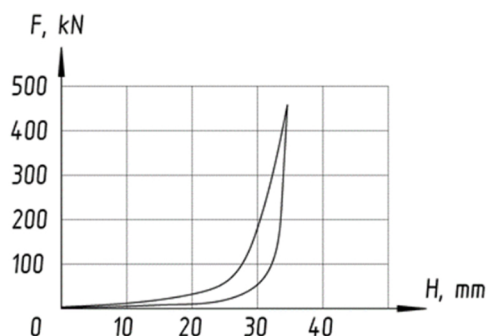
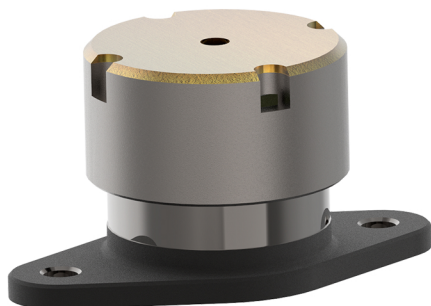


CONSTANT CONTACT SIDE BEARINGS

TYPE A



Free height, mm 144-2

Travel, mm 19.5±1

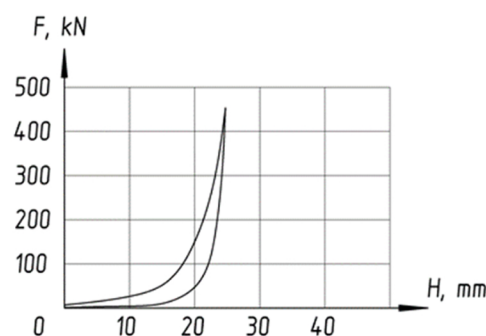
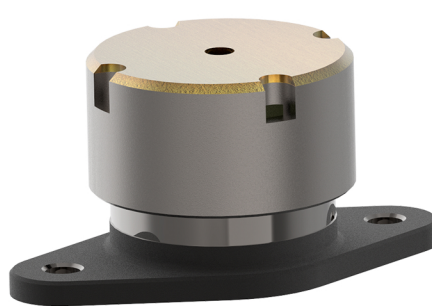
End force (at the end of travel), kN 27

Additional travel, mm +10 minimum

End force (at the end of additional travel), kN 300

Max. Force, kN 460

TYPE B



Free height, mm 134-2

Travel, mm 11.1±1

End force (at the end of travel), kN 23

Additional travel, mm +10 minimum

End force (at the end of additional travel), kN 300

Max. Force, kN 460

MAIN FEATURES

In comparison with the existing Constant contact side bearings, all excessive impact loads on the bogie bolster and the car body are smoothed. At the same time, the closure of the cap with the housing does not occur, so the elastomeric pad is protected from large loads and is capable to smooth over loads up to 460kN without any damages (patent).

Protected from temperature fluctuations, associated with climatic conditions or with heating during the working process. Heating or cooling of Constant contact side bearings doesn't lead to changes in its overall height, which is important for ensuring high stability of its operation under alternating cyclic loads

CONSTANT CONTACT SIDE BEARINGS

Are made of two types - long-stroke type A, for installation on high-speed wagons, and short-stroke type B, for installation on wagons operating at low speeds.

